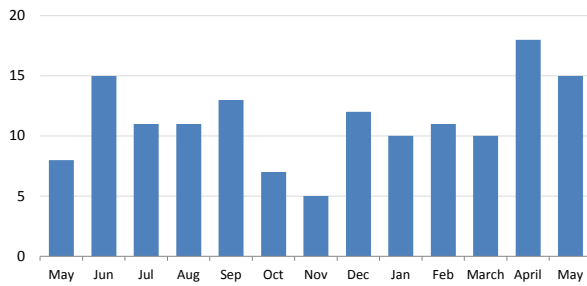




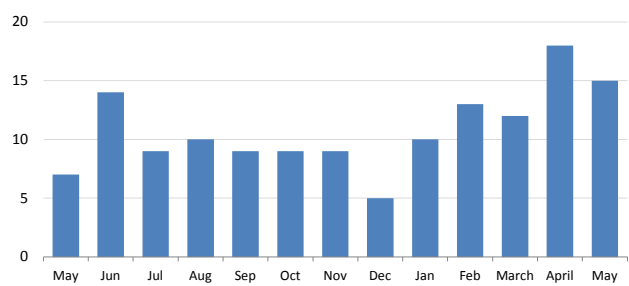
Lawyer Assistance Program Caseload and Case Inventory: (Data through May 31, 2017)

Caseflow

Intakes

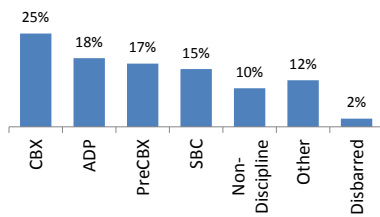


Cases Closed

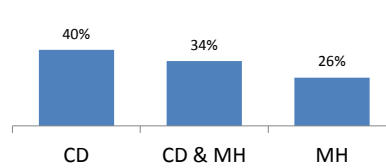


Case Inventory: 137

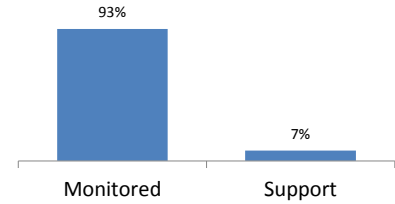
Referral Source



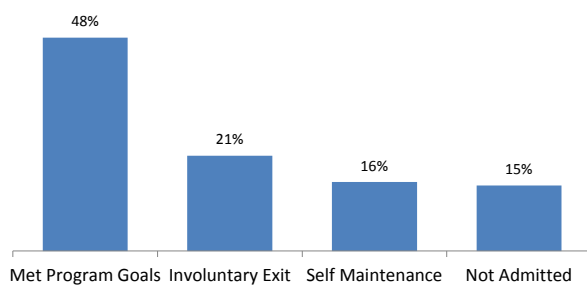
Reason for Participation



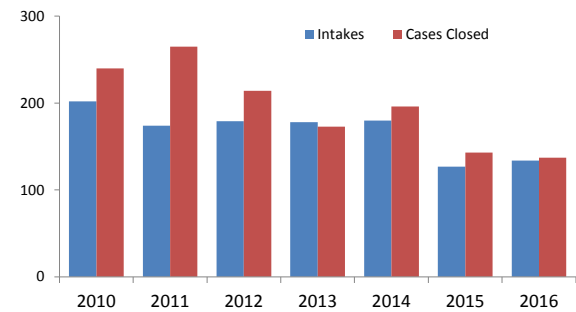
Type of Program



Reason for Case Closure - 2016



Previous Years Caseflow



* CD - Chemical Dependence
MH - Mental Health



Lawyer Assistance Program Caseload and Case Inventory: (Data through May 31, 2017)

Intakes

		Referral Source						% PreCBX & CBX
		PreCBX	CBX	Non-Discipline	ADP	SBC	Other	
2016	May	1	1	2	1	3	0	25%
	Jun	4	2	4	1	4	0	40%
	Jul	1	3	3	1	0	3	36%
	Aug	1	2	3	4	0	1	27%
	Sep	0	10	1	1	0	1	77%
	Oct	4	2	0	1	0	0	86%
	Nov	0	1	1	1	2	0	20%
	Dec	4	2	3	0	1	2	50%
2017	Jan	0	5	2	1	1	1	50%
	Feb	0	6	2	1	1	1	55%
	March	0	3	1	3	1	2	30%
	April	2	4	3	1	4	4	33%
	May	3	5	0	3	2	2	53%

Cases Closed

		Referral Source						% PreCBX & CBX
		PreCBX	CBX	Non-Discipline	ADP	SBC	Other	
	May	3	1	0	2	1	0	57%
	Jun	4	8	0	0	2	0	86%
	Jul	2	2	0	1	3	1	44%
	Aug	1	2	3	0	2	2	30%
	Sep	0	1	4	3	0	1	11%
	Oct	2	2	1	1	1	2	44%
	Nov	0	1	5	1	2	0	11%
	Dec	1	1	2	0	1	0	40%
2017	Jan	1	4	2	0	2	1	50%
	Feb	0	4	2	2	5	0	31%
	March	1	7	1	1	1	1	67%
	April	2	4	3	1	4	4	33%
	May	3	5	0	3	2	2	53%

Inventory-As of May 31, 2017

	CD	CD & MH	MH	Total	Percent
CBX	22	8	4	34	25%
ADP	6	11	8	25	18%
PreCBX	12	10	1	23	17%
SBC	6	8	7	21	15%
Non-Discipline	1	5	8	14	10%
Other	6	4	7	17	12%
Disbarred	2	1	0	3	2%
Total	55	47	35	137	100%
Percent	40%	34%	26%	100%	

	CD	CD & MH	MH	Total	Percent
Monitored	55	44	28	127	93%
Support	0	3	7	10	7%
Total	55	47	35	137	100%
Percent	40%	34%	26%	100%	

Previous Years

	Intakes	Cases Closed
2010	202	240
2011	174	265
2012	179	214
2013	178	173
2014	180	196
2015	127	143
2016	134	137
2017	65	63

Reason for Case Closure

PD - CBX abeyance complete	14
PD - Other	1
PD EC - Successful Completion	7
PD - Support LAP Complete	7
PD - Completed O & A	2
PD - Discontinued contact	10
PD - Financial	1
EC - Terminated	0
PD - Disagreed with recommendations	0
PD - Chose to follow support system	13
EC - Not Accepted / Denied	7
Deceased	0
Moved out of state	1

	N	%
Met Program Goals	31	50%
Involuntary Exit	11	18%
Self Maintenance	13	21%
Not Admitted	7	11%
Total	62	100%