



# The State Bar of California Discipline System Statistical Report June, 2017

Data from May 2016 through May 2017

Produced for the Committee on Regulation & Discipline  
by the Office of Research & Institutional Accountability

[Attachment A](#)

# The State Bar of California

## Discipline System Statistical Report

### Table of Contents

#### Section 1 - Office of Chief Trial Counsel

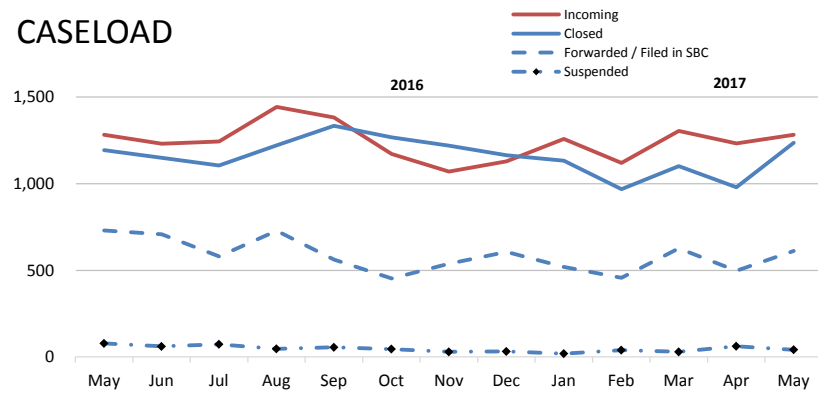
##### **Graphs**

OCTC - Caseload and Inventory	1
OCTC - Time Measures, 2nd Look Cases, Walker Petitions	2
OCTC - Backlog	3

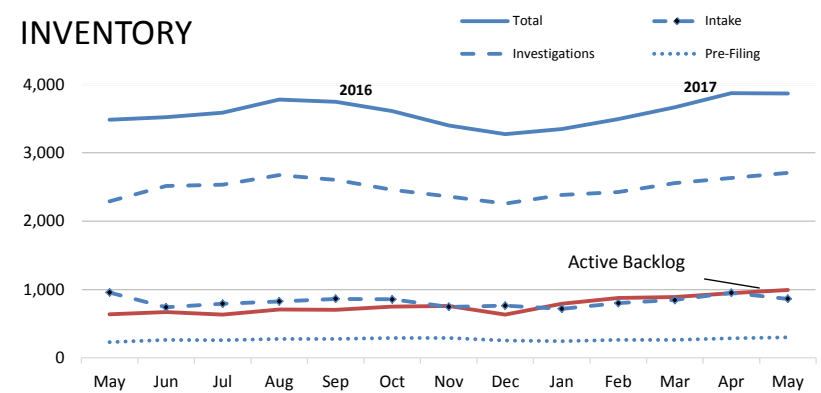
##### **Reference Tables**

OCTC - Caseload and Inventory	4
OCTC - Time Measures, 2nd Look Cases, Walker Petitions	5

## CASELOAD

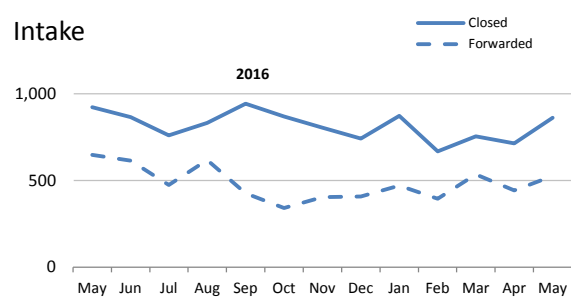


## INVENTORY

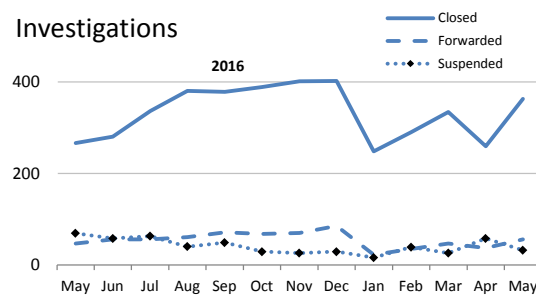


## DISPOSITIONS

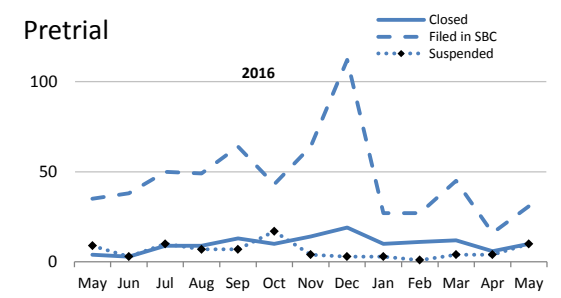
### Intake



### Investigations

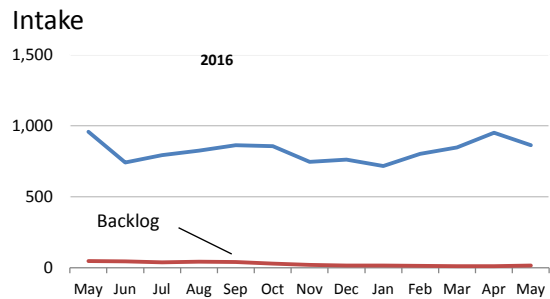


### Pretrial

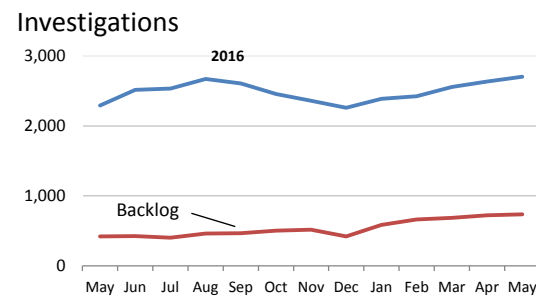


## INVENTORY

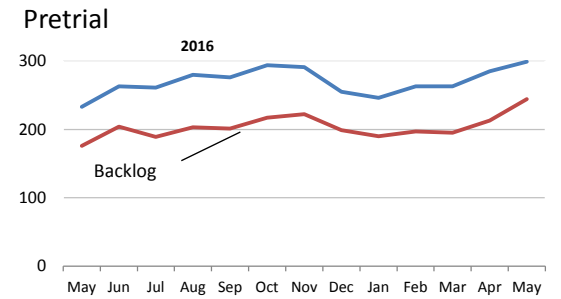
### Intake



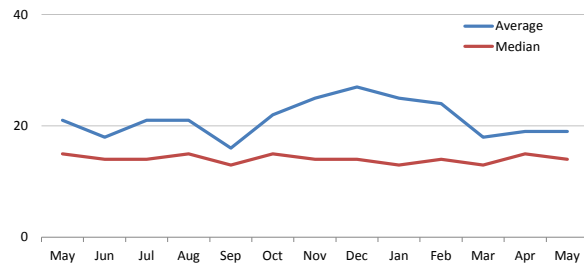
### Investigations



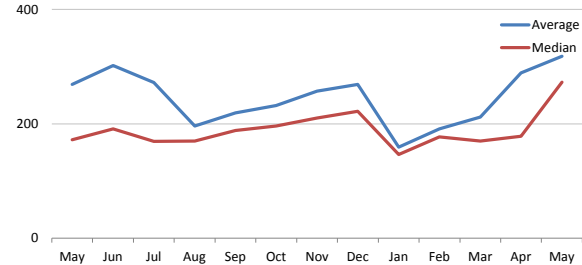
### Pretrial



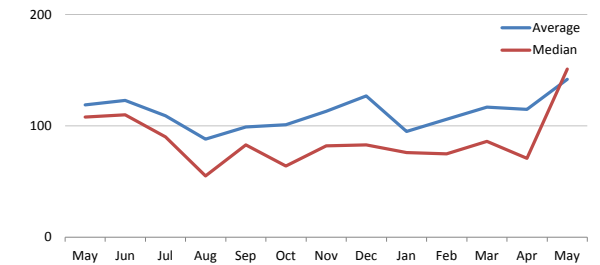
### Days from Intake to Investigation



### Days from Investigation to Pre-Filing

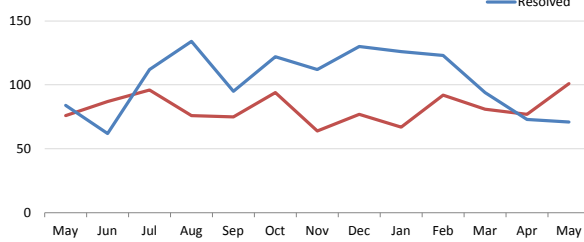


### Days from Pre-Filing to SBC

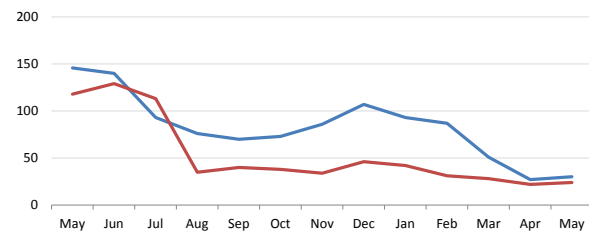


### Second-Look Cases

#### 2nd Look - Caseload

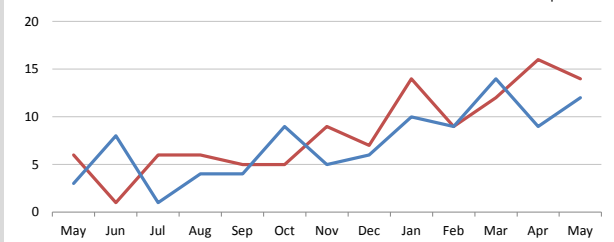


#### 2nd Look - Days from Filing to Dispo

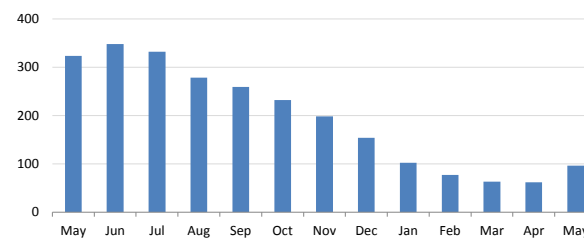


### Walker Petitions

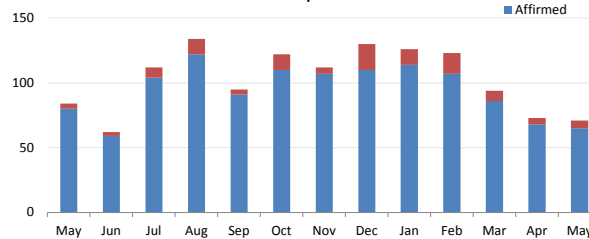
#### Supreme Court Caseload



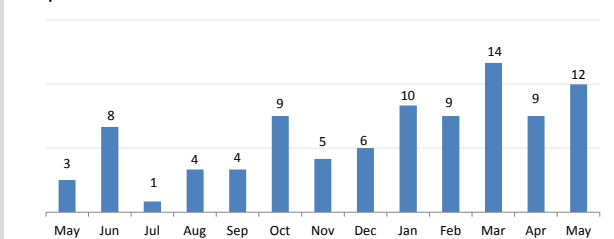
### 2nd Look - Inventory



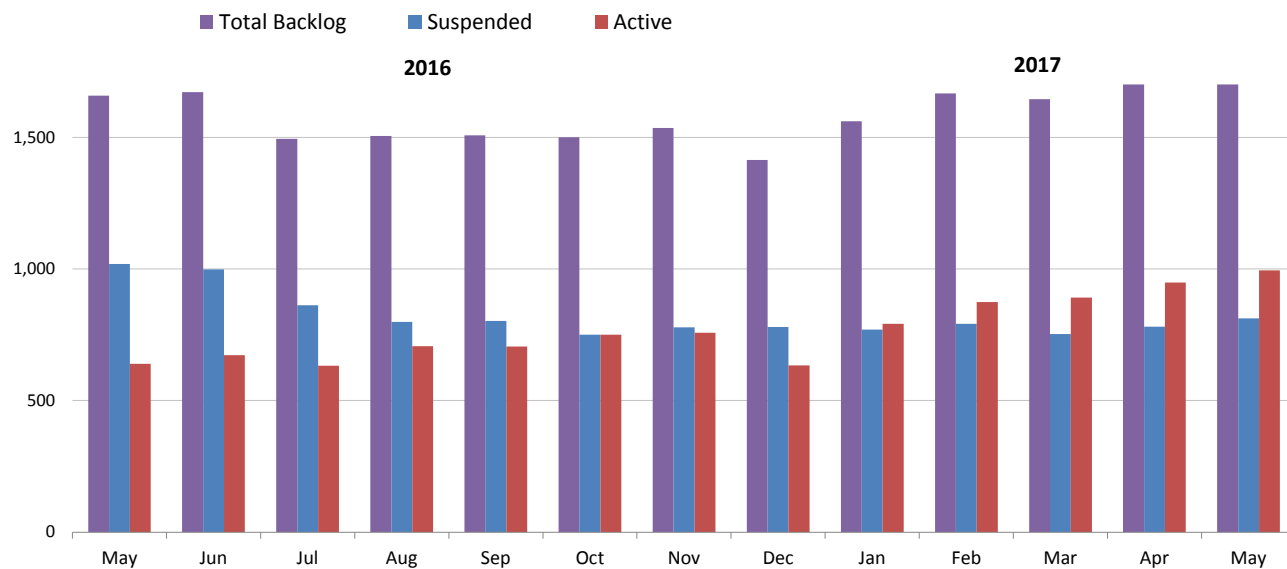
### 2nd Look - Affirmed & Re-Opened



### Supreme Court Decisions

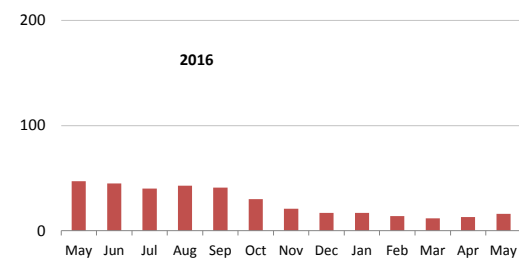


## Total Backlog

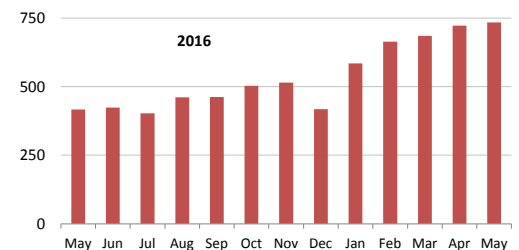


## Active Backlog

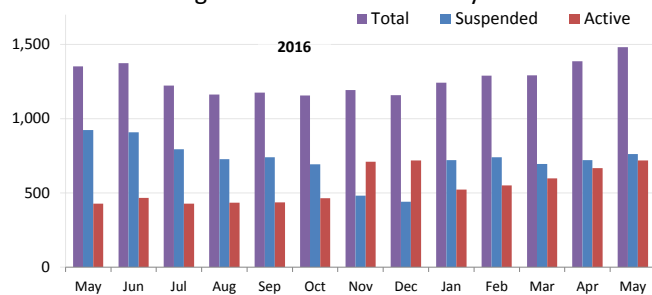
### Intake



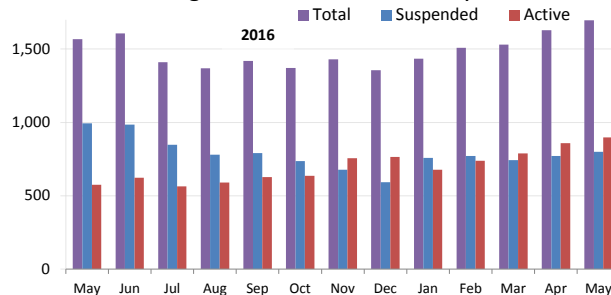
### Investigation



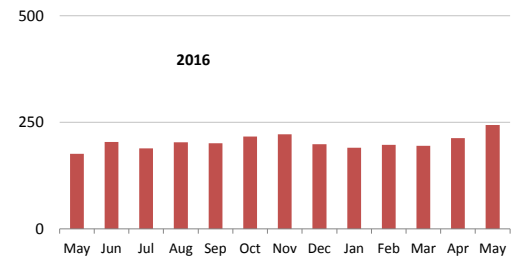
### If Backlog Definition Were 243 Days



### If Backlog Definition Were 197 Days



### Prefiling



<b>OCTC TOTALS</b>	May	Jun	Jul	Aug	Sep	Oct	Nov	Dec	Jan	Feb	Mar	Apr	May
Incoming	1,283	1,231	1,244	1,443	1,383	1,172	1,070	1,130	1,259	1,119	1,305	1,232	1,283
Closed	1,193	1,149	1,105	1,222	1,334	1,268	1,220	1,164	1,132	969	1,101	980	1,236
Forwarded / Filed in SBC	731	709	581	729	562	453	539	606	520	457	627	497	613
Suspended	78	61	73	47	56	46	30	32	19	40	30	62	42
Total Inventory	3,482	3,519	3,586	3,778	3,745	3,608	3,398	3,275	3,349	3,491	3,668	3,870	3,868
Total Backlog	1,659	1,672	1,494	1,506	1,508	1,501	1,536	1,414	1,562	1,667	1,645	1,730	1,808
Active Backlog	640	673	632	707	705	750	758	634	792	875	892	949	995
Suspended Backlog	1,019	999	862	799	803	751	778	780	770	792	753	781	813
<b>Active Backlog as % of Inventory</b>	<b>18%</b>	<b>19%</b>	<b>18%</b>	<b>19%</b>	<b>19%</b>	<b>21%</b>	<b>22%</b>	<b>19%</b>	<b>24%</b>	<b>25%</b>	<b>24%</b>	<b>25%</b>	<b>26%</b>
<b>INTAKE</b>	May	Jun	Jul	Aug	Sep	Oct	Nov	Dec	Jan	Feb	Mar	Apr	May
Intake Incoming	1,283	1,231	1,244	1,443	1,383	1,172	1,070	1,130	1,259	1,119	1,305	1,232	1,283
Intake Out-Going	1,572	1,481	1,235	1,452	1,370	1,211	1,210	1,152	1,345	1,063	1,290	1,159	1,389
Closed	923	866	760	833	943	869	805	743	874	668	755	715	863
Forwarded	649	615	475	619	427	342	405	409	471	395	535	444	526
Intake Inventory	958	741	793	825	864	856	747	763	717	802	847	952	864
Active Backlog	47	45	40	43	41	30	21	17	17	14	12	13	16
<b>Active Backlog as % of Inventory</b>	<b>5%</b>	<b>6%</b>	<b>5%</b>	<b>5%</b>	<b>5%</b>	<b>4%</b>	<b>3%</b>	<b>2%</b>	<b>2%</b>	<b>2%</b>	<b>1%</b>	<b>1%</b>	<b>2%</b>
<b>INVESTIGATIONS</b>	May	Jun	Jul	Aug	Sep	Oct	Nov	Dec	Jan	Feb	Mar	Apr	May
Investigations Out-Going	382	394	455	481	498	486	497	516	286	364	407	354	451
Closed	266	280	336	380	378	389	401	402	248	290	334	259	363
Forwarded	47	56	56	61	71	68	70	85	22	35	47	37	56
Suspended	69	58	63	40	49	29	26	29	16	39	26	58	32
Investigations Inventory	2,291	2,515	2,532	2,673	2,605	2,458	2,360	2,257	2,386	2,426	2,558	2,633	2,705
Active Backlog	417	424	403	461	463	503	515	418	585	664	685	723	735
<b>Active Backlog as % of Inventory</b>	<b>18%</b>	<b>17%</b>	<b>16%</b>	<b>17%</b>	<b>18%</b>	<b>20%</b>	<b>22%</b>	<b>19%</b>	<b>25%</b>	<b>27%</b>	<b>27%</b>	<b>27%</b>	<b>27%</b>
<b>PRE-FILING (NTS)</b>	May	Jun	Jul	Aug	Sep	Oct	Nov	Dec	Jan	Feb	Mar	Apr	May
Pre-Filing Out-Going	48	44	69	65	84	70	82	134	40	39	61	26	51
Closed	4	3	9	9	13	10	14	19	10	11	12	6	10
Filed in SBC	35	38	50	49	64	43	64	112	27	27	45	16	31
Suspended	9	3	10	7	7	17	4	3	3	1	4	4	10
Pre-Filing Inventory	233	263	261	280	276	294	291	255	246	263	263	285	299
Active Backlog	176	204	189	203	201	217	222	199	190	197	195	213	244
<b>Active Backlog as % of Inventory</b>	<b>76%</b>	<b>78%</b>	<b>72%</b>	<b>73%</b>	<b>73%</b>	<b>74%</b>	<b>76%</b>	<b>78%</b>	<b>77%</b>	<b>75%</b>	<b>74%</b>	<b>75%</b>	<b>82%</b>
<b>HEARING DEPARTMENT</b>	May	Jun	Jul	Aug	Sep	Oct	Nov	Dec	Jan	Feb	Mar	Apr	May
Formal Filings	56	56	65	60	70	48	81	128	34	41	52	26	46
Notice of Disciplinary Charge	21	20	47	44	57	38	55	102	16	25	39	13	20
Stipulation	15	18	4	5	7	5	9	11	13	2	6	3	11
Conviction Transmittal	14	14	12	9	3	4	13	14	3	8	5	10	9
Other*	6	4	2	2	3	1	4	1	2	6	2	0	6
Discipline Decisions or Orders	49	50	46	50	35	69	30	35	54	34	50	66	93
Trial Decision	7	5	7	11	3	15	10	1	10	7	6	6	13
Stipulation	31	29	25	23	9	31	13	21	30	16	29	39	20
Default Decision	8	11	2	13	16	20	2	9	12	6	9	18	55
Other*	3	5	12	3	7	3	5	4	2	5	6	3	5

\* Other filings includes: 1) Inactive Enrollment Proceeding, 2) Reinstatement Petitions, 3) Moral Character Appeals.

Other decisions includes: 1) Dismissal: By Trial Decision, 2) Discipline Recommendation: ADP Decision, 3) Dismissal: OCTC Motion, 4) Admonition\*. Note that an Admonition is not discipline.

<b>INTAKE - Time to Investigation</b>	May	Jun	Jul	Aug	Sep	Oct	Nov	Dec	Jan	Feb	Mar	Apr	May
Average Days	21	18	21	21	16	22	25	27	25	24	18	19	19
Median Days	15	14	14	15	13	15	14	14	13	14	13	15	14
<b>INVESTIGATION - Time to Pre-Filing</b>	May	Jun	Jul	Aug	Sep	Oct	Nov	Dec	Jan	Feb	Mar	Apr	May
Average Days	269	302	272	196	219	232	257	269	159	191	212	289	318
Median Days	172	191	169	170	188	196	210	222	146	177	170	178	273
<b>PRE-FILING - Time to Formal Filing</b>	May	Jun	Jul	Aug	Sep	Oct	Nov	Dec	Jan	Feb	Mar	Apr	May
Average	119	123	109	88	99	101	113	127	95	106	117	115	142
Median	108	110	90	55	83	64	82	83	76	75	86	71	151
<b>Second-Look Cases</b>	May	Jun	Jul	Aug	Sep	Oct	Nov	Dec	Jan	Feb	Mar	Apr	May
Received	76	87	96	76	75	94	64	77	67	92	81	77	101
Resolved	84	62	112	134	95	122	112	130	126	123	94	73	71
Inventory	323	348	332	278	259	232	198	154	102	77	63	62	96
Affirmed (Remains Closed)	80	59	104	122	91	110	107	110	114	107	86	68	65
Reopened (for Investigation)	4	3	8	12	4	12	5	20	12	16	8	5	6
Mean Days to Disposition	146	140	93	76	70	73	86	107	93	87	51	27	30
Median Days to Disposition	118	129	113	35	40	38	34	46	42	31	28	22	24
<b>Walker Petitions</b>	May	Jun	Jul	Aug	Sep	Oct	Nov	Dec	Jan	Feb	Mar	Apr	May
Filed	6	1	6	6	5	5	9	7	14	9	12	16	14
Disposed	3	8	1	4	4	9	5	6	10	9	14	9	12
Granted	0	0	0	0	0	0	0	0	0	0	0	0	0
Denied	3	8	1	4	4	9	5	6	10	9	14	9	12
<b>Backlog</b>	May	Jun	Jul	Aug	Sep	Oct	Nov	Dec	Jan	Feb	Mar	Apr	May
Total Backlog	1,659	1,672	1,494	1,506	1,508	1,501	1,536	1,414	1,562	1,667	1,645	1,730	1,808
Active Backlog	640	673	632	707	705	750	758	634	792	875	892	949	995
Suspended Backlog	1,019	999	862	799	803	751	778	780	770	792	753	781	813
<b>Alternative Measures of Backlog</b>	May	Jun	Jul	Aug	Sep	Oct	Nov	Dec	Jan	Feb	Mar	Apr	May
If Backlog Were 243 Days													
Total	1,351	1,373	1,222	1,161	1,174	1,155	1,191	1,157	1,242	1,289	1,292	1,387	1,480
Suspended	923	908	794	727	739	692	481	439	720	740	694	720	761
Active	428	465	428	434	435	463	710	718	522	549	598	667	719
If Backlog Were 197 Days													
Total	1,568	1,607	1,411	1,369	1,418	1,371	1,431	1,356	1,435	1,508	1,531	1,629	1,697
Suspended	994	985	848	780	791	736	676	592	758	770	743	770	800
Active	574	622	563	589	627	635	755	764	677	738	788	859	897