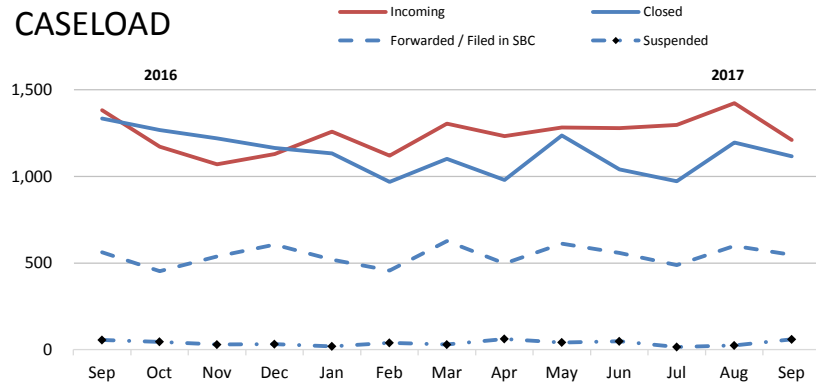
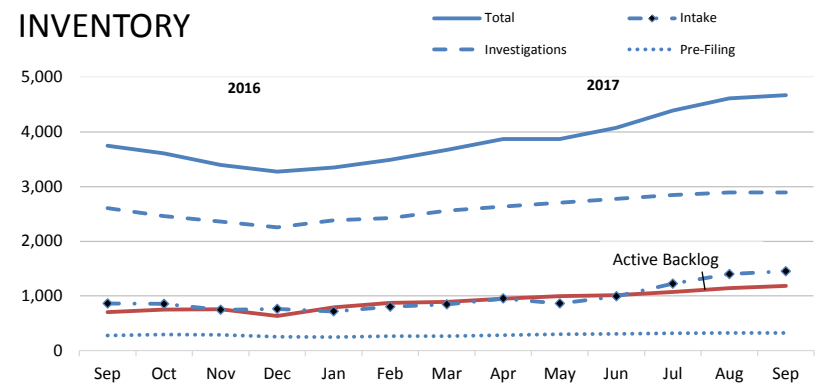


OCTC - Caseload and Case Inventory

CASELOAD

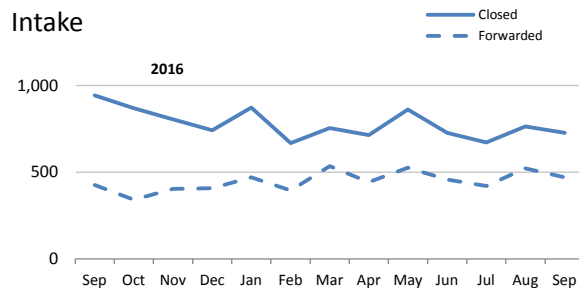


INVENTORY

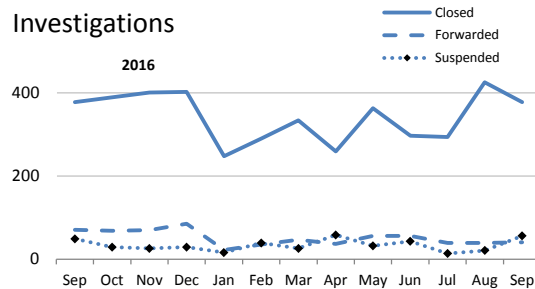


DISPOSITIONS

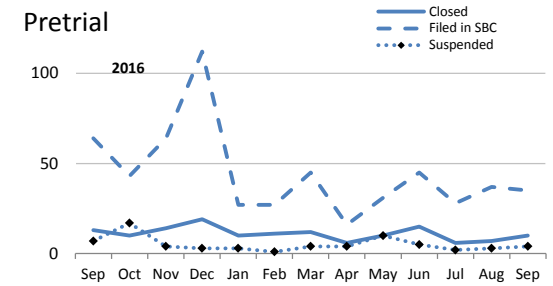
Intake



Investigations

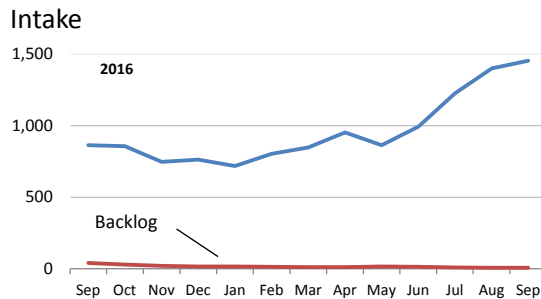


Pretrial

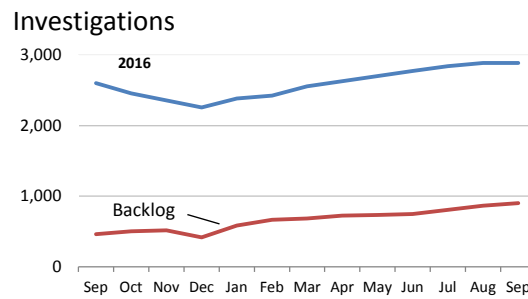


INVENTORY

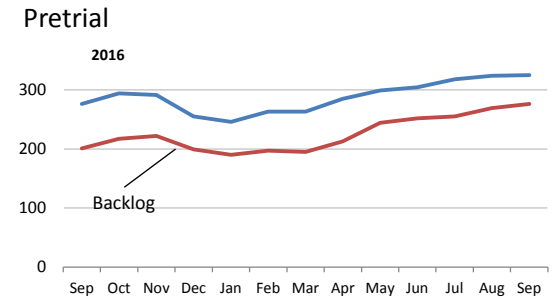
Intake



Investigations



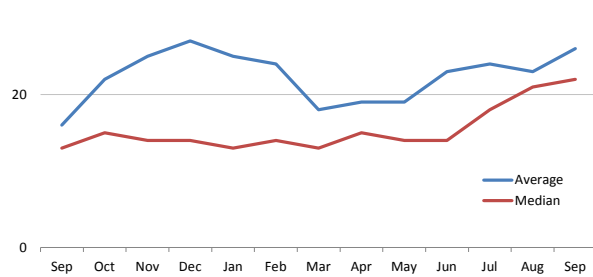
Pretrial



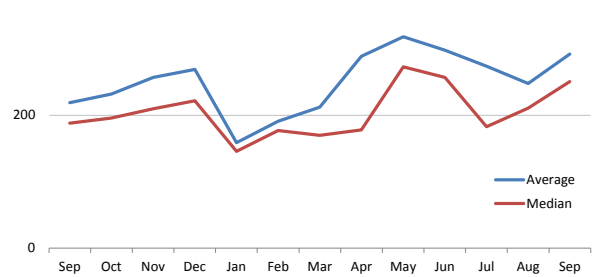
Only active backlog is counted in this report. Suspended backlog is reported separately on the Backlog Report.

OCTC - Time Measures, 2nd Look Cases, and Walker Petitions

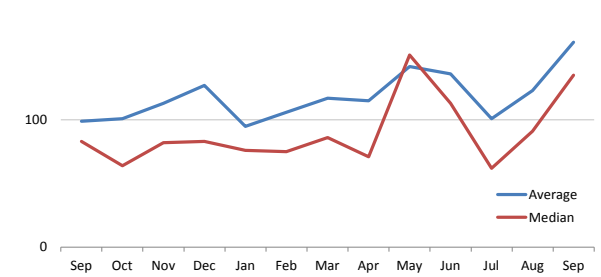
Days from Intake to Investigation



Days from Investigation to Pre-Filing

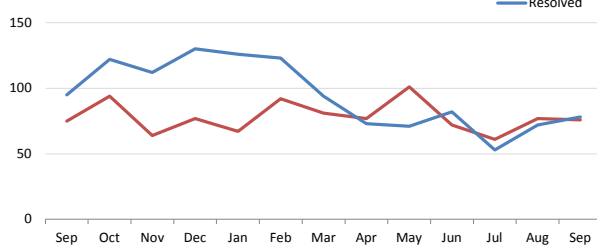


Days from Pre-Filing to SBC

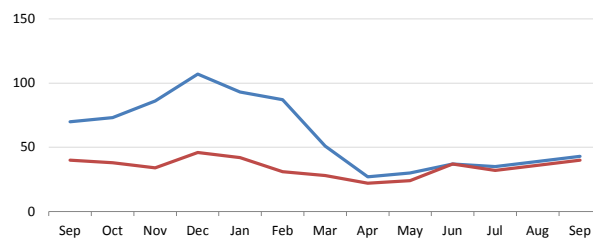


Second-Look Cases

2nd Look - Caseload

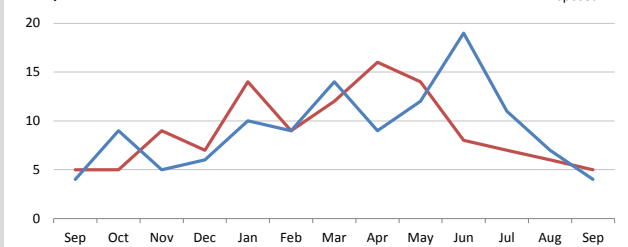


2nd Look - Days from Filing to Dispo

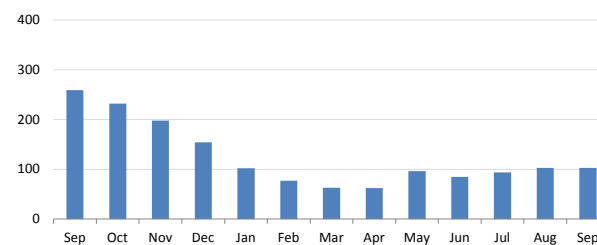


Walker Petitions

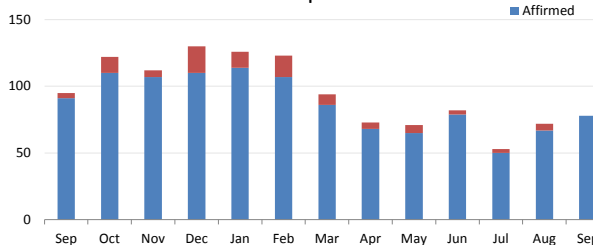
Supreme Court Caseload



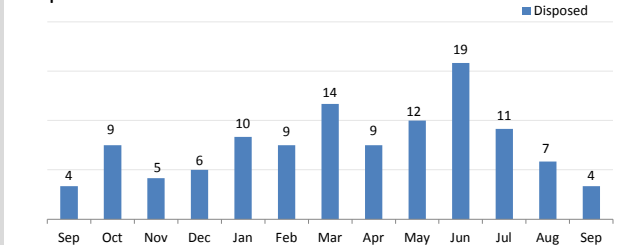
2nd Look - Inventory



2nd Look - Affirmed & Re-Opened

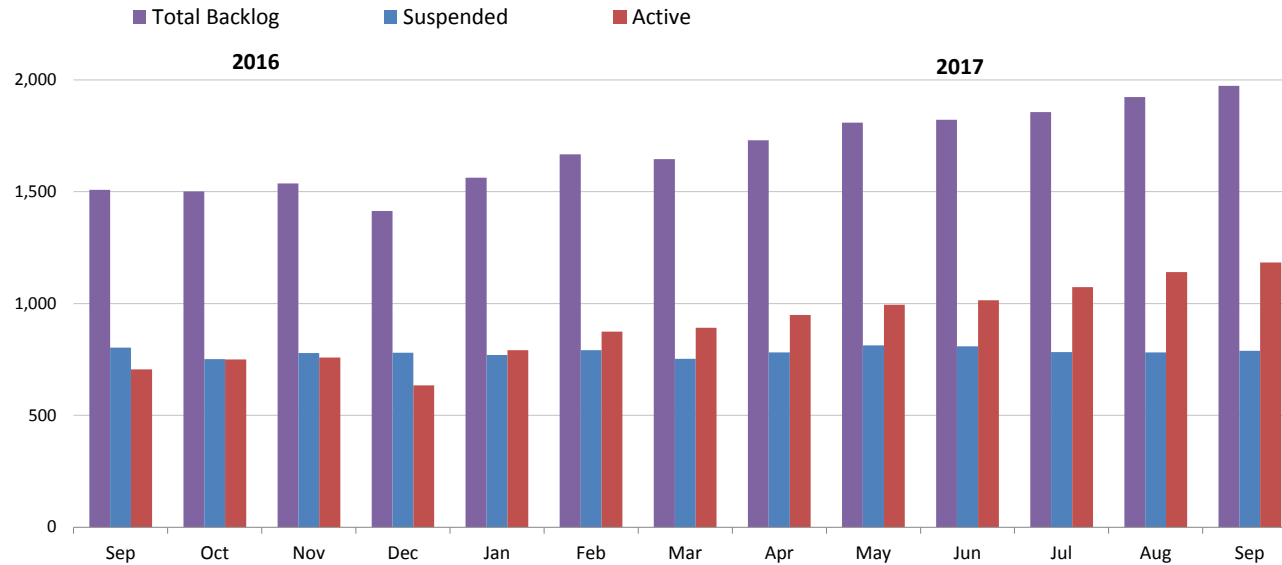


Supreme Court Decisions



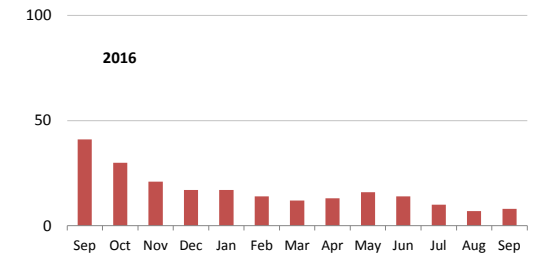
OCTC - Backlog

Total Backlog

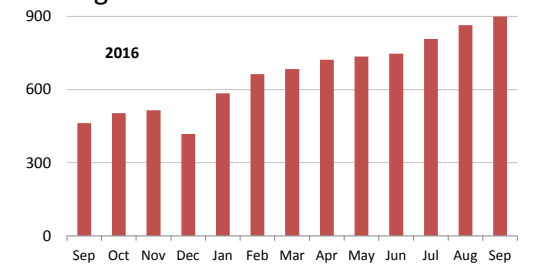


Active Backlog

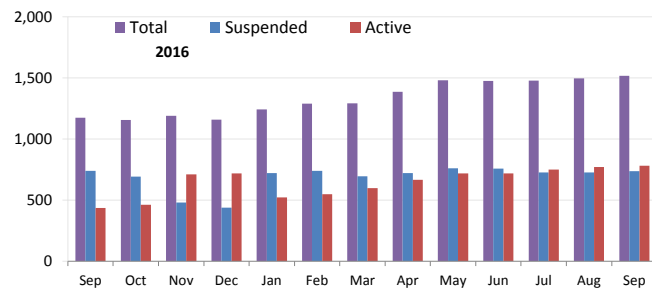
Intake



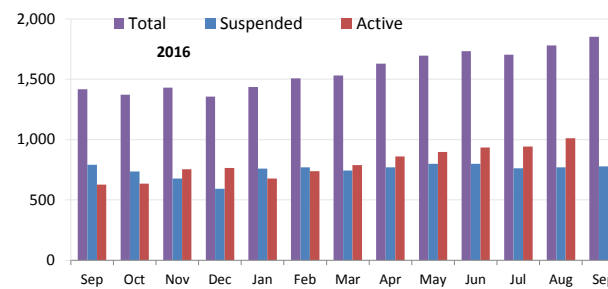
Investigation



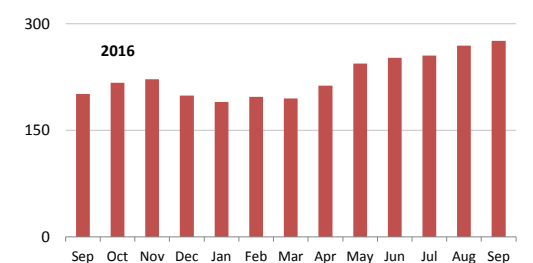
If Backlog Definition Were 243 Days



If Backlog Definition Were 197 Days



Prefiling



Cases are suspended for a number of reasons the most common of which is that the respondent defaulted or is expected to be disbarred in another matter.

OCTC - Caseload and Case Inventory

OCTC TOTALS	Sep	Oct	Nov	Dec	Jan	Feb	Mar	Apr	May	Jun	Jul	Aug	Sep
Incoming	1,383	1,172	1,070	1,130	1,259	1,119	1,305	1,232	1,283	1,279	1,298	1,422	1,210
Closed	1,334	1,268	1,220	1,164	1,132	969	1,101	980	1,236	1,040	972	1,196	1,116
Forwarded / Filed in SBC	562	453	539	606	520	457	627	497	613	559	488	599	547
Suspended	56	46	30	32	19	40	30	62	42	48	16	24	60
Total Inventory	3,745	3,608	3,398	3,275	3,349	3,491	3,668	3,870	3,868	4,073	4,388	4,614	4,668
Total Backlog	1,508	1,501	1,536	1,414	1,562	1,667	1,645	1,730	1,808	1,822	1,856	1,923	1,973
Active Backlog	705	750	758	634	792	875	892	949	995	1,014	1,073	1,141	1,184
Suspended Backlog	803	751	778	780	770	792	753	781	813	808	783	782	789
Active Backlog as % of Inventory	19%	21%	22%	19%	24%	25%	24%	25%	26%	25%	24%	25%	25%
INTAKE	Sep	Oct	Nov	Dec	Jan	Feb	Mar	Apr	May	Jun	Jul	Aug	Sep
Intake Incoming	1,383	1,172	1,070	1,130	1,259	1,119	1,305	1,232	1,283	1,279	1,298	1,422	1,210
Intake Out-Going	1,370	1,211	1,210	1,152	1,345	1,063	1,290	1,159	1,389	1,186	1,093	1,287	1,199
Closed	943	869	805	743	874	668	755	715	863	728	672	764	728
Forwarded	427	342	405	409	471	395	535	444	526	458	421	523	471
Intake Inventory	864	856	747	763	717	802	847	952	864	992	1,225	1,399	1,452
Active Backlog	41	30	21	17	17	14	12	13	16	14	10	7	8
Active Backlog as % of Inventory	5%	4%	3%	2%	2%	2%	1%	1%	2%	1%	1%	1%	1%
INVESTIGATIONS	Sep	Oct	Nov	Dec	Jan	Feb	Mar	Apr	May	Jun	Jul	Aug	Sep
Investigations Out-Going	498	486	497	516	286	364	407	354	451	396	347	485	475
Closed	378	389	401	402	248	290	334	259	363	297	294	425	378
Forwarded	71	68	70	85	22	35	47	37	56	56	39	39	41
Suspended	49	29	26	29	16	39	26	58	32	43	14	21	56
Investigations Inventory	2,605	2,458	2,360	2,257	2,386	2,426	2,558	2,633	2,705	2,777	2,845	2,891	2,891
Active Backlog	463	503	515	418	585	664	685	723	735	748	808	865	900
Active Backlog as % of Inventory	18%	20%	22%	19%	25%	27%	27%	27%	27%	27%	28%	30%	31%
PRE-FILING (NTS)	Sep	Oct	Nov	Dec	Jan	Feb	Mar	Apr	May	Jun	Jul	Aug	Sep
Pre-Filing Out-Going	84	70	82	134	40	39	61	26	51	65	36	47	49
Closed	13	10	14	19	10	11	12	6	10	15	6	7	10
Filed in SBC	64	43	64	112	27	27	45	16	31	45	28	37	35
Suspended	7	17	4	3	3	1	4	4	10	5	2	3	4
Pre-Filing Inventory	276	294	291	255	246	263	263	285	299	304	318	324	325
Active Backlog	201	217	222	199	190	197	195	213	244	252	255	269	276
Active Backlog as % of Inventory	73%	74%	76%	78%	77%	75%	74%	75%	82%	83%	80%	83%	85%
HEARING DEPARTMENT	Sep	Oct	Nov	Dec	Jan	Feb	Mar	Apr	May	Jun	Jul	Aug	Sep
Formal Filings	70	48	81	128	34	41	52	26	46	60	58	51	46
Notice of Disciplinary Charge	57	38	55	102	16	25	39	13	20	24	25	33	31
Stipulation	7	5	9	11	13	2	6	3	11	21	3	5	4
Conviction Transmittal	3	4	13	14	3	8	5	10	9	10	28	11	8
Other*	3	1	4	1	2	6	2	0	6	5	2	2	3
Discipline Decisions or Orders	35	69	30	35	54	34	50	66	93	66	65	49	37
Trial Decision	3	15	10	1	10	7	6	6	13	16	20	10	20
Stipulation	9	31	13	21	30	16	29	39	20	31	27	17	7
Default Decision	16	20	2	9	12	6	9	18	55	15	15	11	8
Other*	7	3	5	4	2	5	6	3	5	4	3	11	2

* Other Filings includes: 1) Inactive Enrollment Proceeding, 2) Reinstatement Petitions, 3) Moral Character Appeals.

* Other Decisions includes: 1) Dismissal (by Trial Decision), 2) Discipline Recommendation (ADP Decision), 3) Dismissal (OCTC Motion), 4) Admonition. Note that an Admonition is not discipline.

OCTC - Time Measures, 2nd Look Cases, Walker Petitions, and Backlog

INTAKE - Time to Investigation	Sep	Oct	Nov	Dec	Jan	Feb	Mar	Apr	May	Jun	Jul	Aug	Sep
Average Days	16	22	25	27	25	24	18	19	19	23	24	23	26
Median Days	13	15	14	14	13	14	13	15	14	14	18	21	22
INVESTIGATION - Time to Pre-Filing	Sep	Oct	Nov	Dec	Jan	Feb	Mar	Apr	May	Jun	Jul	Aug	Sep
Average Days	219	232	257	269	159	191	212	289	318	298	274	248	292
Median Days	188	196	210	222	146	177	170	178	273	257	183	211	251
PRE-FILING - Time to Formal Filing	Sep	Oct	Nov	Dec	Jan	Feb	Mar	Apr	May	Jun	Jul	Aug	Sep
Average	99	101	113	127	95	106	117	115	142	136	101	123	161
Median	83	64	82	83	76	75	86	71	151	113	62	91	135
Second-Look Cases	Sep	Oct	Nov	Dec	Jan	Feb	Mar	Apr	May	Jun	Jul	Aug	Sep
Received	75	94	64	77	67	92	81	77	101	72	61	77	76
Resolved	95	122	112	130	126	123	94	73	71	82	53	72	78
Inventory	259	232	198	154	102	77	63	62	96	85	94	103	103
Affirmed (Remains Closed)	91	110	107	110	114	107	86	68	65	79	50	67	78
Reopened (for Investigation)	4	12	5	20	12	16	8	5	6	3	3	5	0
Mean Days to Disposition	70	73	86	107	93	87	51	27	30	37	35	39	43
Median Days to Disposition	40	38	34	46	42	31	28	22	24	37	32	36	40
Walker Petitions	Sep	Oct	Nov	Dec	Jan	Feb	Mar	Apr	May	Jun	Jul	Aug	Sep
Filed	5	5	9	7	14	9	12	16	14	8	7	6	5
Disposed	4	9	5	6	10	9	14	9	12	19	11	7	4
Granted	0	0	0	0	0	0	0	0	0	0	0	0	0
Denied	4	9	5	6	10	9	14	9	12	19	11	7	4
Backlog	Sep	Oct	Nov	Dec	Jan	Feb	Mar	Apr	May	Jun	Jul	Aug	Sep
Total Backlog	1,508	1,501	1,536	1,414	1,562	1,667	1,645	1,730	1,808	1,822	1,856	1,923	1,973
Active Backlog	705	750	758	634	792	875	892	949	995	1,014	1,073	1,141	1,184
Suspended Backlog	803	751	778	780	770	792	753	781	813	808	783	782	789
Alternative Measures of Backlog	Sep	Oct	Nov	Dec	Jan	Feb	Mar	Apr	May	Jun	Jul	Aug	Sep
If Backlog Were 243 Days													
Total	1,174	1,155	1,191	1,157	1,242	1,289	1,292	1,387	1,480	1,476	1,478	1,495	1,518
Suspended	739	692	481	439	720	740	694	720	761	758	727	725	736
Active	435	463	710	718	522	549	598	667	719	718	751	770	782
If Backlog Were 197 Days													
Total	1,418	1,371	1,431	1,356	1,435	1,508	1,531	1,629	1,697	1,732	1,704	1,782	1,853
Suspended	791	736	676	592	758	770	743	770	800	799	761	771	779
Active	627	635	755	764	677	738	788	859	897	933	943	1,011	1,074