



Monterey College of Law
100 Col. Durham Street
Seaside, California 93955

Major Change Request

Re-designation of Current Santa Cruz Satellite Campus to a Branch Campus

Submitted, December 1, 2017

Revised and Resubmitted, February 23, 2018

INTRODUCTION

Pursuant to Rule 4.165 of the *Accredited Law School Rules*, Monterey College of Law (MCL) is notifying the Committee of Bar Examiners (Committee) of a contemplated major change and requests approval by the Committee. The major change is defined in Section 4.165 (B) of the rules: "... opening a new branch".

Under Rule 4.165 (B), MCL requests approval of the Committee to expand its current *satellite* campus in Santa Cruz, California that currently only offers a first-year law school curriculum, to the status of *branch* campus that will offer a full four-year degree program. As defined by Guideline 15.1(A), a satellite campus of an accredited law school is a location where students may complete no more than one half of the total number of units required to earn a Juris Doctor Degree or any other law degree that the law school is authorized by the Committee to offer. At the point that the offered curriculum expands to third-year courses or when the location has an enrollment greater than 30 students, the location must apply to become a branch campus and provide the same administrative and academic resources of a regular campus.

MCL has successfully provided first-year courses at the Santa Cruz satellite campus since 2010 and is responding to requests from the community, faculty, and students to expand the program from a *satellite* to *branch* campus starting in the Spring Semester 2019. As detailed in the comprehensive plan included in this proposal, the law school has the administrative and academic resources and experience to expand the existing campus in compliance with the rules and guidelines.

The name of the Santa Cruz branch campus shall follow the naming protocol of the law school's other branch locations and will be "*Santa Cruz College of Law; a branch of Monterey College of Law*" (SCCL). The branch shall be owned and operated by MCL, a nonprofit law school institution founded by local lawyers and judges in 1972 and accredited by the Committee since 1981. The law school is currently in full compliance with the Rules and Guidelines of California Accredited Law Schools and is scheduled for its next five-year site visit in Fall 2018. The institution is a 501(c)3 California non-profit corporation based in Seaside, California with approved branch campuses operating successfully in San Luis Obispo and Bakersfield.

A. PROGRAM DESCRIPTION

History of the Santa Cruz Program - MCL was approved by the Committee to open a satellite campus in Santa Cruz, California in 2010. This was the first *satellite* campus location requested and approved by the Committee for a CALS and has remained as the only satellite campus for the past seven years. Prior to the approval of the MCL satellite location, two other CALS operated multiple locations for several decades. The Colleges of Law at Santa Barbara & Ventura and Southern California Institute of Law have both operated multiple campuses under a single administration since their original accreditation by the Committee. Due to the lack of clarity regarding the type and level of services and resources required at separate campus locations, the Committee clarified the guidelines in 2009 by amending Division 15 of the guidelines to make a clear distinction between satellite and branch campuses. The guidelines were further amended by the Committee in 2016 to provide additional notice and content requirements for branch campus applications. MCL's original satellite campus application and this current branch campus application are in full compliance with the rules and guidelines as amended and enforced by the Committee.

Because MCL's Santa Cruz location is the only current CALS satellite location, this is the first time that a major change request has been presented to the Committee to re-designate an existing satellite campus to the status of a branch campus. Unlike a request to open a branch campus in a new market, MCL has a seven-year history providing law school classes at its satellite location in Santa Cruz. Furthermore, prior to the opening of the satellite campus, MCL had a 35-year history of serving Santa Cruz county law students through its original Monterey and subsequent Seaside main campus locations. Other than MCL and its satellite campus, there are no other law schools directly serving the local Santa Cruz community. (See Map A below.)



Map A. Location and distance - Law Schools in Santa Cruz region.

Red markers identify the locations of JFK University School of Law's *proposed San Jose Branch* (28.5 miles), Lincoln Law School San Jose (31.5 miles), Santa Clara University Law School (30 miles), and Stanford Law School (42 miles).

Blue markers identify the location of the MCL Santa Cruz proposed branch campus and Monterey College of Law's main campus (37.5 miles).

Although detailed historical records are not available, it is estimated that

approximately 20% of the MCL student population originates from Santa Cruz County. This is the reason that MCL opened its first-year satellite campus in Santa Cruz in 2010. Since the opening of the satellite location, MCL has enrolled approximately 70 students in the Santa Cruz first-year law school program, with annual cohorts ranging in size from 6 to 11 students per year.

Faculty and Classroom: The satellite campus was designed to offer the first-year courses of Contracts, Torts, and Criminal Law & Procedure in a traditional classroom setting. Upon successful completion of these courses, Santa Cruz students are required to commute to the MCL main campus in Seaside, California, a distance of approximately 37 miles, to complete their second, third, and/or fourth years of the JD or MLS degree programs.

The Santa Cruz first-year program has its own designated faculty who are respected lawyers and judges from the Santa Cruz bench and bar. Classes are held in a classroom at 303 Water Street located directly across the street from the Santa Cruz County Superior Court and the Santa Cruz County Law Library. Campus Dean Steve LaBerge, who has served in this role since the satellite campus first opened, has a law office in the same building and provides local administrative and academic support for students and faculty. The classroom seats up to 20 students and is equipped with traditional classroom whiteboards, a large screen television, AV projector, and high speed Internet. The Student Bar Association provides coffee and bottled water services and supplies and a small printer/copier for students as part of their Student Bar annual dues. The students and faculty have free lighted parking at the location.

Change in Market Conditions: When the Santa Cruz location opened in 2010, the average commute from the satellite campus in Santa Cruz to the MCL main campus in Seaside, CA was 45 to 60 minutes. At the time, this was seen as an acceptable commute for full-time working students transitioning from their worksite to the MCL campus in time for classes starting at 6:30 p.m.

Unfortunately, traffic on Highway 1 between Santa Cruz and Seaside has become notably worse over the past seven years. Students and faculty members now report that it consistently takes 60 to 75 minutes (or longer) during the prime-time weekday commuting period between 5:00 to 6:30 p.m. Students and faculty have reported frequent difficulty in leaving work at 5:00 p.m. in Santa Cruz and being able to dependably arrive safely and calmly at the main campus in time for the 6:30 p.m. start of classes.

During the same years, traffic between Santa Cruz and San Jose along the Hwy. 17 corridor has also grown demonstrably worse. The rush-hour commute between the two cities is frequently more than one-hour. In addition, the Hwy. 17 corridor is a winding, relatively narrow 2-lane highway that has a relatively high number of traffic incidents that can add delays and closures, particularly during dark, wet,

foggy, or windy conditions (which are not uncommon).

Therefore, the increase in traffic over the past several years from Santa Cruz to locations outside of the region has created a significant barrier to access to legal education for residents in the community.

Request from Faculty and Students: For this reason, the students and faculty from Santa Cruz have requested that MCL evaluate the viability of expanding the current Santa Cruz program from a one-year satellite campus to a four-year branch campus. Having completed that analysis (*See* Section C. below), MCL has determined that the Santa Cruz market will support expanding the existing satellite campus to a branch campus and that MCL has the administrative and academic resources to support the expanded branch campus without placing our other campus operations in financial, academic, or operational jeopardy.

Therefore, under Rule 4.165 (B), MCL requests approval of the Committee to expand its current *satellite* campus in Santa Cruz, California to the status of *branch* campus effective Spring Semester 2019. The name of the branch campus shall follow the naming protocol of the law school's other branch locations and will be "*Santa Cruz College of Law; a branch of Monterey College of Law*" (SCCL).

B. COMPLIANCE WITH APPLICABLE RULES AND GUIDELINES

1. Rule 4.164 Prior Approval of Major Changes - An accredited law school contemplating a major change must notify the Committee and obtain its approval at least ninety days before making the change. The notice must explain in detail any effect the change might have on the law school's compliance with the rules and be submitted with the fees specified in the Schedule of Charges and Deadlines. The Committee may then require submission of additional information or an inspection.

MCL proposes to expand the Santa Cruz location from a satellite to a branch Campus beginning with the Spring 2019 Semester. This major change request meets the 90-day requirement of Rule 4.164. The following details outline the resources of the law school that will support the expansion of the location and its ability to remain in compliance with the rules and guidelines for accredited law schools.

2. Rule 165(B) Major Changes - Guideline 15.2 requires that as a major change pursuant to Rule 4.165(B), no less than 180 days prior to the first day of classes, a law school must obtain the prior approval of the Committee to open a branch or satellite campus. To apply for and receive Committee approval, a law school must provide the Committee with a comprehensive explanation of the operating plans for the new branch campus.

MCL requests approval that the re-designation of the Santa Cruz campus from satellite to branch be effective as of Spring 2019. Therefore, the approval of this major change at the March 23, 2018 Committee meeting will be in compliance with

the timing and notice requirements of Guideline 15.2.

As detailed in the following comprehensive explanation of its operating plans, MCL has the financial and administrative resources to expand and operate the current Santa Cruz campus as a four-year branch campus. The law school's existing administrative and academic infrastructure, including course management systems, policies, procedures, course syllabi, exams, practice skill programs, marketing, admissions, academic support, financial reporting, and business office management will support an additional branch campus. The increase of 15 to 20 new students each year in the proposed branch program will not create a significant additional burden on the existing administrative infrastructure and staff. This is evidenced by the law school's successful ongoing operation of its current main campus (since 1972), while opening and operating successful locations in Santa Cruz (since August 2010), San Luis Obispo (since August 2015), and Bakersfield (since August 2017).

MCL is a 501(c)3 nonprofit educational institution. As such, it dedicates all of the resources from tuition, program revenue, grants, and donations to the operation of its four law school locations. The law school has a balance sheet of more than \$7.5 million (*See Appendix B*), and projected 2018 revenue and expenses of \$2.2 million and \$2.1 million respectively. The law school revenue is derived from tuition, fees, other program revenue, grants, and income from investments. The law school budgets for each law school location to generate adequate tuition and fees from students attending each location to pay for the allocated expenses for the location. The expenses for central services such as the registrar, business manager, admissions, and academic support are allocated proportionately to each location. The economy of scale for sharing the expenses of central services among multiple locations has been a significant factor in the law school's successful growth in operations over the past several years.

The proposed budget for the Santa Cruz branch campus (*See Appendix A*) indicates that with an enrollment of 15-18 students per year the branch is projected to generate adequate tuition and fees to pay for the allocated expenses of operating the location as a branch campus. The law school has direct experience in opening new law school branches. In both San Luis Obispo and Bakersfield, the new law school branches enrolled 15-18 students during each of their initial years. In both of these cases the branch campus was a new location that did not have the benefit of already serving the local community. In the case of Santa Cruz, MCL is a known entity, with numerous alumni serving as lawyers, judges, and community leaders. The satellite campus has been on location for seven years. Therefore, the projection of an enrollment of 15-18 students per year appears to be very reasonable based on the law schools previous experience. In addition, the financial resources of the law school provide adequate funds to cover unanticipated shortfalls without jeopardizing existing programs (*See Appendix B*)

3. Rule 4.160 Standards - (H) Multiple Locations. *Accreditation is granted to a law school as an institution. If a law school receives approval to open a branch campus or a satellite campus, the branch or satellite campus must be operated in compliance with the Standards, except that the Committee may determine whether, and to what extent, the Library Standard shall apply. The new campus must be in substantial compliance with the Standards one month prior to the start of classes, and must be in full compliance within two years. The Dean of the law school will certify substantial compliance by letter no later than one month prior to the start of classes.*

Compliance: MCL was founded in 1972 and has been accredited by the CBE since 1981. The law school was found to be in compliance with the Rules and Guidelines at its most recent five-year site visit in 2013 and in the subsequent 2014, 2015, and 2016 Annual Self-Study Reports. As required by the Guidelines and described in this filing, the proposed branch campus will be in substantial compliance with the standards no later than one month prior to the re-designation as a branch campus in Spring 2019.

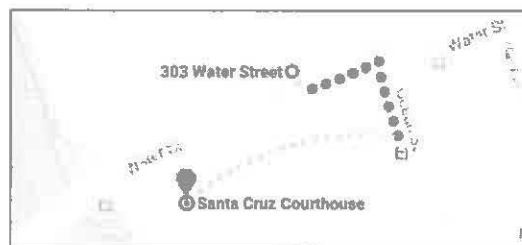
Library: Guideline 8.6 authorizes the Committee to approve the campus use of an off-site law library that is in reasonable proximity to the law school location.

8.6 Other Law Libraries.

Upon prior approval of the Committee, a law school that is located in reasonable proximity to a public, private or other law library, which contains all the mandatory requirements of Guideline 8.4, may satisfy the library requirements as set forth in Division 8 by filing a declaration from the dean that confirms the following:

- A) the governing authorities of any such other law library have agreed to permit the use of the library by the law school's students and faculty at no additional charge and under the same accessibility and conditions required by Guideline 8.3; and*
- B) the other library contains and offers equal access to all mandatory library contents as required by Guideline 8.4.*

The Santa Cruz County Superior Court and Law Library is located directly across the street from the Santa Cruz campus location and includes the library resources required by the Guidelines. The Committee has previously granted MCL an annual waiver of the hard-copy library requirements for the Santa Cruz campus because of the close proximity of the satellite campus to the County Law Library. Students are provided access cards for after-hours and weekend access to the law library. [However, it is important to note that with the recent amendments to Guideline 8.1 allowing online library resources to meet the requirements of the guidelines, a waiver will no longer be required as of the effective date of the new amendments.] All online library resources required by Guideline 8.1



and 8.2 are provided by student Lexis Nexis accounts.

Rule 1.7 Primary Administrative Office, Classroom, and Law Library Facilities Location and Hours; Availability of Records.

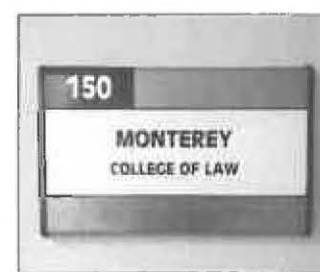
The law school's primary administrative office, classrooms, and branch campuses, and all associated law library facilities are located in California. The primary administrative offices of the law school are located at 100 Col. Durham Street, Seaside, CA.



The law school has operated at the Seaside location since May of 2005. All permanent records of the law school, including the student records for all branch campuses are maintained at the primary administrative office. The law school's administrative resources, facilities, staffing, policies, and procedures have been reviewed as part of the law school's most recent five-year accreditation site visit in 2013 and found to be in full compliance with the Rules and Guidelines.

The primary administrative office is open and permanent records are available for access during regular business hours, Monday through Thursday, 9:00 a.m. to 6:30 p.m. The law school is not open on Fridays.

Santa Cruz Classroom Facility: The current Santa Cruz satellite campus is located at 303 Water Street in the downtown area of Santa Cruz.



The location has one dedicated classroom and access to a second classroom as needed. The classrooms and restrooms are ADA accessible and designated ADA parking is provided. The current classrooms are adequate to meet the branch campus needs for the next two years. Additional classroom resources will be added, as necessary, beginning in Fall 2020.

Dean Steve LaBerge, who has served as Campus Dean for the location since 2010 has a law office in the same building and provides local administrative and academic support for students and faculty. Dean LaBerge is a graduate of Santa Clara Law School and is a Certified Criminal Law Specialist having practiced in Santa Cruz for more than 35 years. Dean LaBerge has been on the MCL faculty since 2007.

Each of the two classrooms seat up to 20 students and are equipped with traditional classroom whiteboards, a large screen television, AV projector, and high speed Internet. The Student Bar Association provides coffee and bottled water services and supplies and a small printer/copier for students as part of their Student Bar annual dues. The students and faculty have access to free parking at the location.



Law Library: All Santa Cruz students are provided with Lexis Nexis accounts that meet the requirements of amended Guideline 8.1 and 8.2. In addition, students will continue to have access to the Santa Cruz County law library during regular and after-hours (with access card). The Committee has approved the use of the County Law Library under Guideline 8.6 for the existing satellite campus for the past seven years. The County Law Library collection includes all of the legal resources required by the Rules. The library is managed by a full-time law librarian who is available during regular library hours to assist students. In addition, students are provided with access cards to allow entry to the library after-hours and on weekends.



Rule 2.10 Statement of Provided Student Services, Experiences, and Activities; Adequate Support and Resources for Provided Services, Experiences, and Activities.

Academic Support: All categories of academic support services provided at the branch campus will be equivalent to those provided at the law school's other locations. The academic support program is coordinated by Dean Elizabeth Xyr, the law school Dean of Academics. Dean Xyr has served as an academic advisor at the law school since 2008. Prior to her current role, Dean Xyr served as Assistant Dean of Academic Support and Associate Dean of Student Success. Dean Xyr also developed the law school's unique bar skills program that is integrated into the law school's primary curriculum.

Clinical Programs and Practical Skills Training: First-year law students do not traditionally participate in clinical programs at the law school. However, for the upper division Santa Cruz students, local clinical opportunities will be developed in collaboration with the Santa Cruz Bar Association and other legal service agencies. The six (6) units of required practical skills training will be provided through courses, internships, and externships that follow the same rules and requirements as those in place for the other MCL locations.

Student Organizations: Santa Cruz students will participate in Student Bar Association activities through election of student representatives to the MCL student bar association. In addition, similar to the law school's locations in Monterey, San Luis Obispo, and Bakersfield, a Santa Cruz student representative will be elected to serve as a student representative to the Santa Cruz County Bar Association.

Business Services: Heather English serves as the law school's full-time Business Manager and is located at the primary administrative office. Students at all of the law school's locations manage their student financial accounts on-line through Populi, the law school's course management system. Ms. English is available to all students by telephone, e-mail, and through the Populi system during regular business hours, Monday through Thursday, 9:00 a.m. to 6:30 p.m.

Admissions: Assistant Dean Wendy LaRivière has served as MCL's Dean of Admissions for more than 15 years. Dean LaRivière also manages the law school's marketing and recruiting program and the web-based admissions portal that serves as one of the primary methods of inquiry for prospective law students. Dean LaRivière is also available to prospective students for all MCL locations by telephone and e-mail during regular business hours, Monday through Thursday, 9:00 a.m. to 6:30 p.m. Admissions files for prospective Santa Cruz students will be compiled and maintained at the law school's primary administrative offices. All enrollment decisions for Santa Cruz will be made by the law school's Admissions Committee at the main campus and will follow the same standards, policies, and procedures that are utilized for all MCL locations.

Curriculum: Santa Cruz students will be required to successfully complete the same 90-unit JD program curriculum that is required at all MCL locations.

Rule 4.1 Law School Dean; Full-Time Administrator; Registrar Duties

President and Dean: Mitchel L. Winick has served as the full-time dean of the law school since August 2005. He previously served as the Assistant Dean at Texas Tech University School of Law, an ABA approved law school, and has more than three-decades of experience in law, legal education, and business. Dean Winick is a former Assistant Attorney General of Texas and has business experience serving as a senior partner in a management consulting firm, vice president of a publicly traded corporation, and founder of a venture capital firm. Dean Winick received his J.D. from the University of Houston Law Center and B.A. (with emphasis in economics and political science) from the University of the Pacific.

As President and Dean of the law school, Dean Winick serves as the chief executive and chief academic officer managing and administering the business, academic, and financial affairs of all locations of the law school. During Dean Winick's tenure, the law school has grown from approximately \$785,000 to more than \$2.2 million in gross revenue. During this period, the law school is the first CALS to be authorized to offer M.L.S. and LL.M. degrees in addition to the traditional J.D. and has improved its cumulative bar pass rate from 39% (2005) to 57% (2015). The law school has also expanded to include the satellite campus in Santa Cruz and successful branch campuses in San Luis Obispo and Bakersfield.

Dean Winick is active in higher education leadership, recently completing a term as chair of the CBE Rules Advisory Committee (RAC) and currently serving as the chair of the Law School Council. He previously served on the State Bar's Presidential Task Force on Admissions Regulatory Reform (TFARR) and on the Standing Committee for the Delivery of Legal Services. Locally he has served on the higher education advisory committees of the Monterey County Business Council, the Panetta Institute for Public Policy, and Leadership Monterey Peninsula.

Campus Dean: Dean Steve LaBerge has been a member of the MCL faculty since 2007 and has served as Campus Dean since 2010. He will continue to serve as the part-time campus dean of the Santa Cruz location for the first two years. At the point that the branch campus has more than 30 students or begins to offer third-year courses, a full-time dean or campus administrator will be hired subject to the rules and guidelines in place at that time.

Registrar: Shashi Chand is the law school's full-time Registrar and is located at the primary administrative offices in Seaside. Ms. Chand has served as Registrar for the law school for more than two decades. Ms. Chand is responsible for recording grades, maintaining all permanent student records, and registering students through Populi, the law school's on-line course management system. The vast majority of all information related to registration and student records, including transcripts, grades,

and formal student notifications are provided to students through the web-based Populi system. Ms. Chand is available by telephone, e-mail, and through the Populi system during regular business hours to students at all MCL locations.

C. MARKET FOR A SANTA CRUZ BRANCH CAMPUS

This proposal reflects the growing demand for legal education within the Santa Cruz region. Approximately 20% of current MCL students come from the Santa Cruz area. This was the original reasoning for opening the Santa Cruz satellite campus in 2010. Since the opening of the satellite location, MCL has enrolled approximately 70 students in the Santa Cruz first-year law school program, with cohorts ranging in size from 6 to 11 students per year. By offering a full four-year program, the school anticipates increasing enrollment to 15-18 students per year. This is similar annual enrollment to the branch campuses in San Luis Obispo and Bakersfield.

Population: Santa Cruz County has a population of approximately 275,000 and has an undergraduate student population of more than 32,000 attending UC Santa Cruz and Cabrillo College. Based upon our experience in opening branch campuses in San Luis Obispo (2015) and Bakersfield (2017), MCL believes that the combination of a growing general population and two strong undergraduate “feeder” institutions provides a market for legal education large enough to support expanding Santa Cruz from a one-year satellite campus to a full branch campus.

The location is also convenient located between UC Santa Cruz and Cabrillo College.



In addition to traditional undergraduate students, Santa Cruz has a broad range of the typical categories of non-traditional law students; court and law firm personnel, county and municipal employees, and adult-learners who are considering a second-career. Santa Cruz County has a much higher than average higher education demographic with more than 52% of the adult population having a bachelors degree or higher in comparison to 31% for the State of California.

Santa Cruz relies primarily on its agriculture, tourism, high technology and educational industries. A 2016 economic development survey indicated business

confidence regarding the years ahead and that the business community has made leaps and bounds in recovering from the 2008 recession. County demographics indicate the type of local economy that traditionally will support additional higher education opportunities.

Job Growth: 2.7%

Unemployment: 7.4%

Work Force: 148,100

Median Household Income: \$70,963

Household Income Growth: 2.4%

High School Attainment: 86.8%

College Attainment: 38.9%

In 2015, Value Penguin, a New York-based consumer data website, ranked Santa Cruz County as the 11th most educated region in the nation, largely due to the quality of its schools, colleges and universities.

UC Santa Cruz: UCSC has a current enrollment of more than 17,000 students. The university does not have a law school, but is ranked nationally for the percentage of its students whose bachelor's degrees lead to doctorates. Over the past three years, approximately 450 UCSC graduates applied to ABA law schools. With an acceptance rate of 72%, this means that approximately 125 of these graduates were not accepted to an ABA law school and provide a special target market for potential MCL Santa Cruz students. However, in conversations with UCSC pre-law students, the number one reason given for not considering MCL is the commute from Santa Cruz to Seaside. MCL believes that by providing an opportunity in Santa Cruz to complete an accredited JD program, a significant number of these students would take advantage of a local law school program.

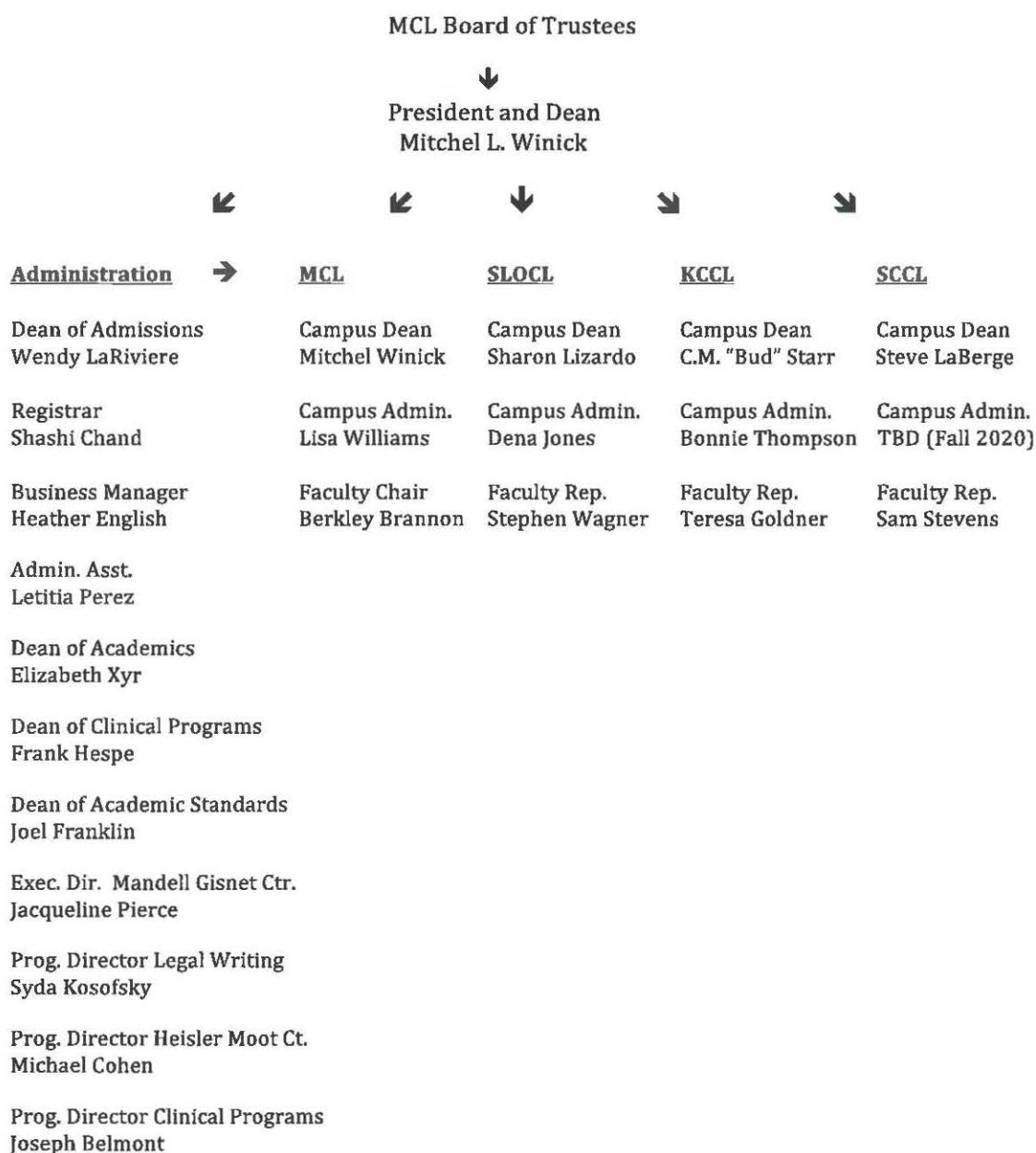
Cabrillo College: Cabrillo College is a respected California Community College located in Santa Cruz that has a current enrollment of more than 15,000 students. The college currently offers Associate Degree programs in Administration of Justice and Criminal Justice and is one of the State Bar of California Pathway to Law program participants. The Pathways project, sponsored by the State Bar's Council on Access and Fairness, established agreements with California community colleges to provide early exposure to the law school experience, individual advisement and mentoring from law school advisors, financial aid counseling, LSAT preparation and waived application fees for certain law schools.

D. LAWFUL OPERATION AND GOVERNANCE

Board of Trustees: MCL operates as a 501(c)3 California non-profit corporation. The MCL Board of Trustees will serve as the fiduciary governing body of the branch campus. MCL Trustees serve three-year terms and may serve two consecutive terms.

Santa Cruz Advisory Board: The MCL Board of Trustees will appoint an advisory board for the branch campus comprised of lawyers, judges, and community leaders. The advisory board will meet quarterly and provide input to the MCL Trustees on issues and policies of importance to the local program. Advisory Board members will serve three-year terms.

Executive Management: President and Dean of the law school, Dean Mitchel Winick serves as the chief executive and chief academic officer managing and administering the business, academic, and financial affairs of all locations of the law school. He is supported locally at each branch by the Campus Deans and faculty and at the main campus by the administrative staff (*See Organizational Chart below*).



E. FACULTY

Following the successful model that MCL has employed for the past 45 years, the adjunct law faculty for the Santa Cruz branch will be practicing lawyers and judges. MCL does not employ any full-time law faculty other than Dean Winick and Dean Xyr. The following experienced first year adjunct professors will continue as the 1L faculty for the Santa Cruz branch. Second-year faculty will be hired prior to Fall 2019. Third- and Fourth-year faculty will be hired in subsequent academic years.

First-Year Faculty:

- Contracts – Robert Patterson, Private Practice, MCL faculty since 1985
- Criminal Law – Hon. Samuel Stevens, Ret. Judge, MCL faculty since 2010
- Torts – David Spini, Private Practice, MCL faculty since 2017
- Legal Research and Writing
 - Jennifer Bruno, Private Practice, MCL faculty since 2010
 - Alexi Haller, Private Practice, MCL faculty since 2014

Upper Division

- TBD (Fall 2019, Fall 2020, Fall 2021)

F. ACADEMIC PROGRAM

First Year Curriculum: The Santa Cruz branch campus will continue to offer the following first-year law courses using the same Monday through Thursday evening schedule (6:30-9:30 p.m.) that is used at the law school's other locations:

Contracts	6 units
Torts	6 units
Criminal Law	6 units
Legal Writing	2 units
<u>Legal Skills</u>	<u>1 unit</u>
Total	21 units

Each of these courses will utilize the same or similar syllabi and casebooks as the first-year courses offered at MCL's other locations. First year students at the branch campus will also take the same format of examinations and be graded following the same rubrics as first year students attending the other MCL locations. The syllabi, course materials, examinations, and grading rubrics for these courses have all previously been submitted for review and approved by the Committee as part of MCL's 2013 five-year site visit.

Practical Skills Training and Moot Court: The Santa Cruz branch campus will offer a minimum of six (6) units of required practical skills training courses, Moot Court,

internships, externships, and clinical programs that will be delivered as residential courses during the second, third, and fourth years. Additional practical skills units will be imbedded within the online curriculum to meet the 15-unit requirement of Guideline 6.9.

Upper Division Curriculum: The Santa Cruz branch campus will expand and offer the same upper division course curriculum on the same weekly course schedule as offered at the law school's other locations. The courses will be added each year as the Fall 2018 entering class cohort advances through the JD and MLS programs.

Academic Policies: The Santa Cruz branch campus will follow the same academic policies that are currently in place at the other MCL locations related to grading, attendance, academic honesty, equal opportunity, anti-harassment, faculty evaluations, course syllabi, examinations, academic probation, course repetition, and disqualification.

Bar Review Resources: MCL has a special license agreement with BarBri and Kaplan to provide a comprehensive bar review programs and skills courses that are included in the law school's tuition and fees. The Santa Cruz branch campus students will have access to the same programs, many of which are offered online.

Student Handbook: All policies and procedures are the same for all MCL locations.

Faculty Handbook: All faculty policies and procedures are the same for all MCL locations.

H. FINANCIAL PROJECTIONS

MCL has developed a four-year pro forma for the Santa Cruz branch campus that includes estimated revenue and expenses for the fiscal years 2019 through 2022. (See Appendix A – 4-Year Pro Forma for details.)

The pro forma includes strategic enrollment objectives, revenue estimates, and program expenses.

	<u>Net Revenue</u>
Year 1	\$ 23,575.00
Year 2	\$204,611.00
Year 3	\$498,982.00
Year 4	\$584,337.00

I. SUMMARY

MCL requests approval of the Committee to expand its current *satellite* campus in Santa Cruz, California that currently only offers a first-year law school curriculum, to the status

of *branch* campus that will offer a full four-year JD degree program and two-year MLS program. The name of the branch campus shall follow the naming protocol of the law school's other branch locations and will be "*Santa Cruz College of Law; a branch of Monterey College of Law*" (SCCL). The branch shall be owned and operated by MCL, a 501(c)3 California non-profit corporation located in Seaside, California.

The status of the existing Santa Cruz program expansion from a *satellite* to *branch* campus will take effect in Spring 2019.

MCL Requests that the Committee approve the above Major Change Requests at the March 23-24, 2018 Committee meeting in order to allow adequate pre-marketing, planning, and implementation of the expanded program.

Submitted by:

A handwritten signature in black ink, appearing to read "Mitchel L. Winick", with a stylized flourish at the end.

Mitchel L. Winick
President and Dean